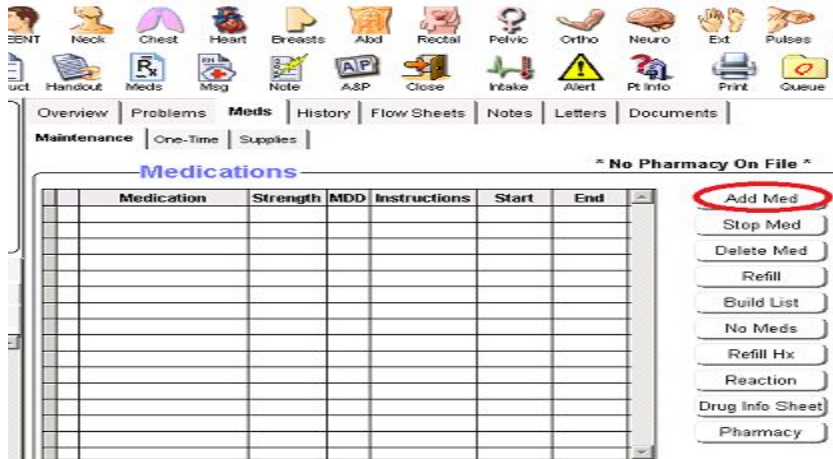


## Adding a New Medication to Patient Chart

From Patient Chart, choose **Add Med**.

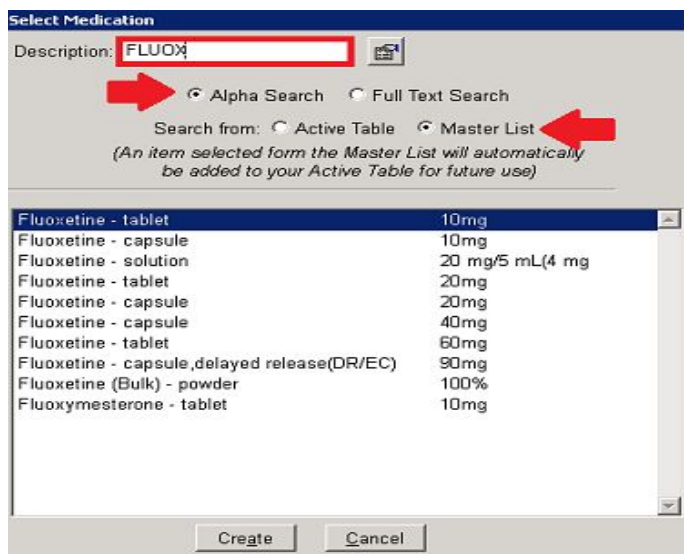


From **Select Medication** window, you may search for the correct med by choosing Alpha Search or Full Text Search.

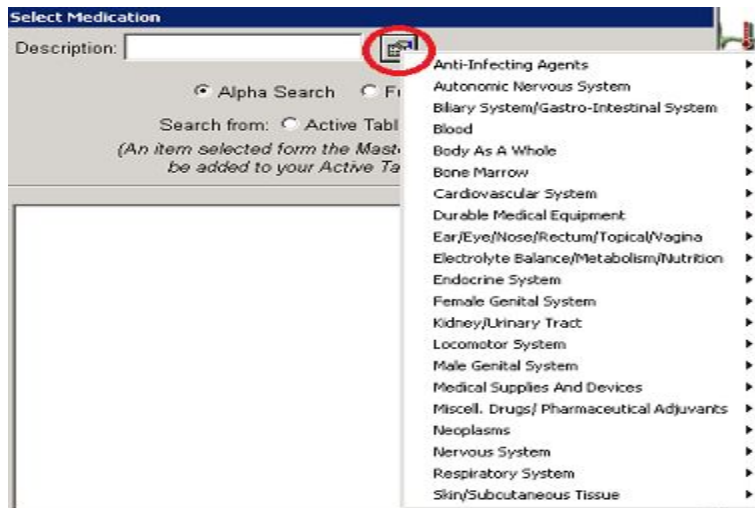
**Active List** has medications your practice has prescribed before. Choosing this will narrow your search field. If you are not sure the medication has been prescribed before, make sure you choose **Master List**. The Master List contains the full directory of medications.

*\*\*\*An item selected from the Master List will automatically be added to your Active Table for future use.\*\*\**

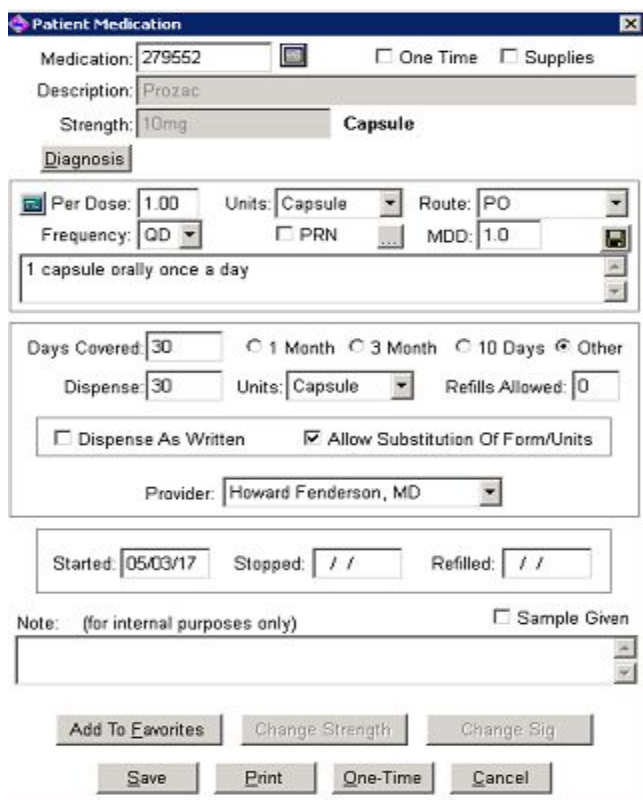
Double click on correct medication.



Clicking on the icon to the right of the description field, allows you to browse medications by class such as “Blood” and “Respiratory System”.



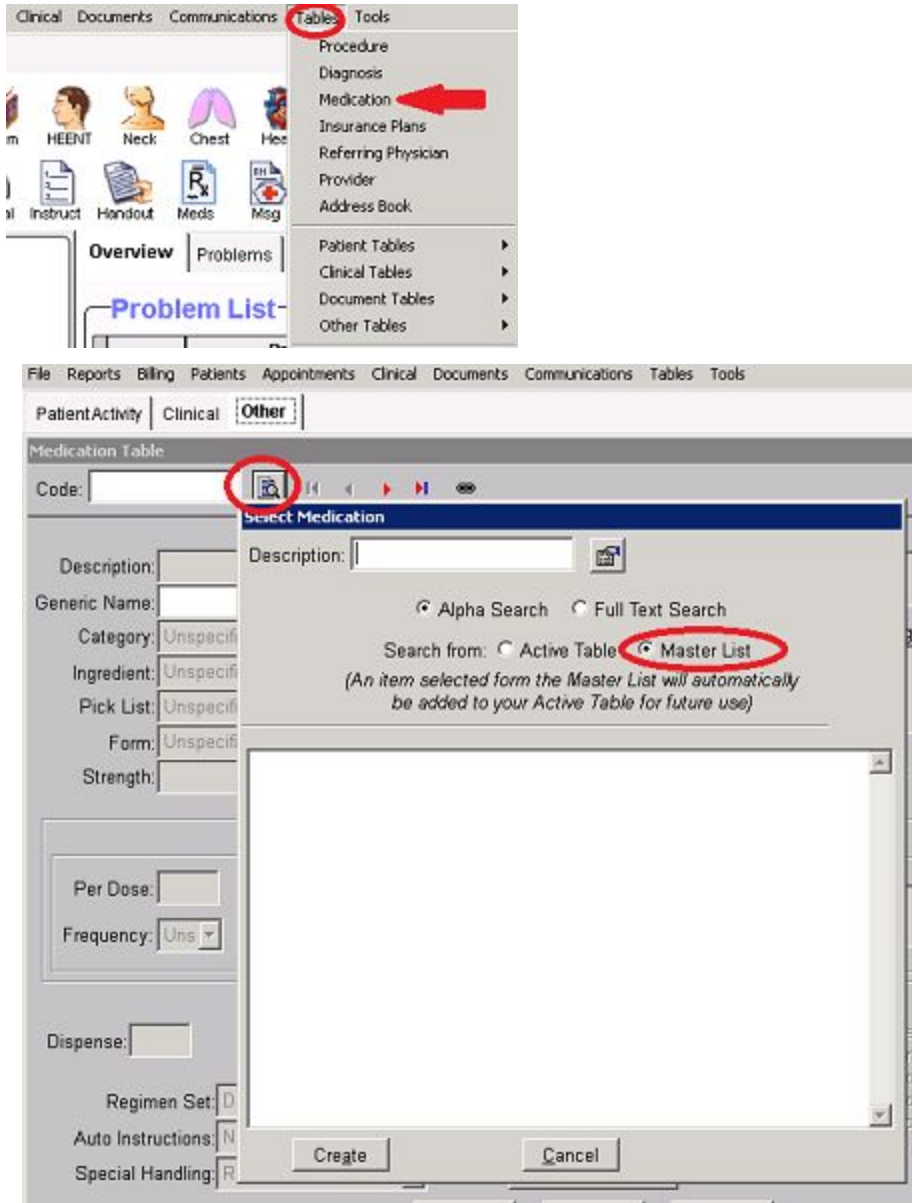
After double clicking on the correct medication, the **Patient Medication** window will open. This is where you will link medication to the patient’s chart. This includes linking the diagnosis to the med and filling out labelling information. Save.



New Medication is now in patient’s medication list and added to practice Active List.

## Alternate Method of Searching for Meds on Master List

You can also select a Medication from the Master List by choosing Tables, Medication. From the Medication Table window, click on the magnifying glass icon. This will bring up the Select Medication window. Make sure you choose to search from Master List.

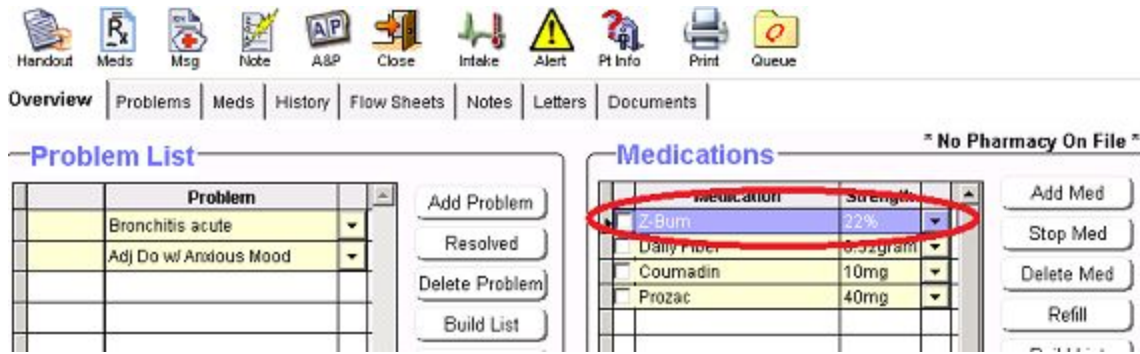


As above, once you have searched in description field, double click or choose **Create** to add the medication to the Active List. Once added to the Active List, you can choose Add Med to prescribe and link it to the patient.

## Troubleshooting

**Unable to refill previously prescribed medication/Script failing:** Script may have slightly changed and needs to be relinked to the updated version on the Master List.

From the Patient's Medication List, **double click on medication.**



Handout Meds Msg Note A&P Close Intake Alert Pt Info Print Queue

Overview Problems Meds History Flow Sheets Notes Letters Documents

**Problem List**

Problem
Bronchitis acute
Adj Do w/ Anxious Mood

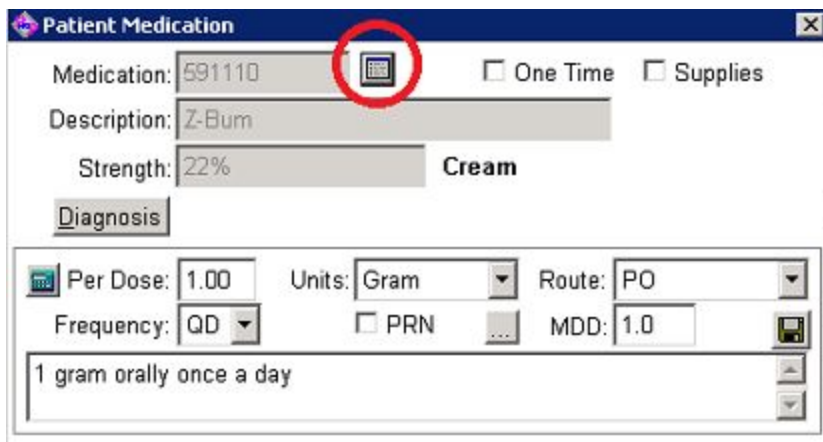
Add Problem  
Resolved  
Delete Problem  
Build List

**Medications** \* No Pharmacy On File \*


Medication	Strength
Z-Bum	22%
Daily Proc	0.5gram
Coumadin	10mg
Prozac	40mg

Add Med  
Stop Med  
Delete Med  
Refill

From **Patient Medication** window, click on **Edit Rx Table** button.



Patient Medication

Medication: 591110   One Time  Supplies

Description: Z-Bum

Strength: 22% Cream

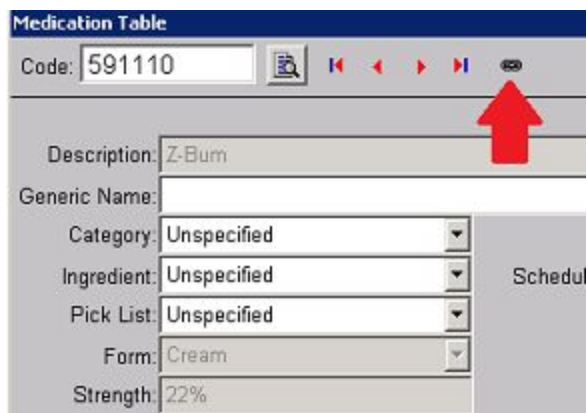
Diagnosis

Per Dose: 1.00 Units: Gram Route: PO



Frequency: QD  PRN MDD: 1.0

1 gram orally once a day

From **Medication Table** window, click on **Link** icon.



Medication Table

Code: 591110  

Description: Z-Bum

Generic Name:

Category: Unspecified

Ingredient: Unspecified

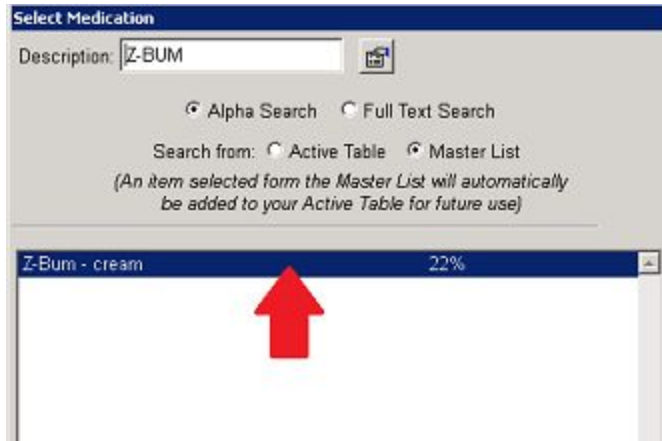
Pick List: Unspecified

Form: Cream

Strength: 22%

Schedule

**Double clicking** on correct medication (there may be a list) will now re-link it to the Master List.  
Save



The screenshot shows a software window titled "Select Medication". At the top, there is a "Description:" field containing the text "Z-BUM" and a search icon. Below this, there are two radio buttons: "Alpha Search" (which is selected) and "Full Text Search". Underneath, there are two more radio buttons: "Active Table" and "Master List" (which is selected). A note in italics states: "(An item selected from the Master List will automatically be added to your Active Table for future use)". At the bottom of the window, there is a list of search results. The first result is "Z-Bum - cream" with a "22%" value to its right. A large red arrow points upwards to this first result.

Make sure you hit **Save** button from Medication Table window **AND** Patient Medication window for the link to be complete.